

# HIATT

H A N D C U F F S

## ARE BACK... AND BETTER THEN EVER

Hiatt handcuffs have been synonymous with quality for over 225 years are now powered by the Safariland brand.

Hiatt handcuffs have been manufactured since 1780 - the basic principles of handcuffing have not materially changed. However, designs have evolved dramatically to address an ever-increasing violent criminal element in society. Assaults on police officers have steadily grown in recent years, requiring handcuffs that can be applied with speed and confidence to minimise risk of injury to both the law enforcement officer and the suspect.

With a wide variety of restraints including chain, hinged, speciality hinged, oversized and lightweight handcuffs, you can count on the same high quality construction and features from a name you trust. SAFARILAND.

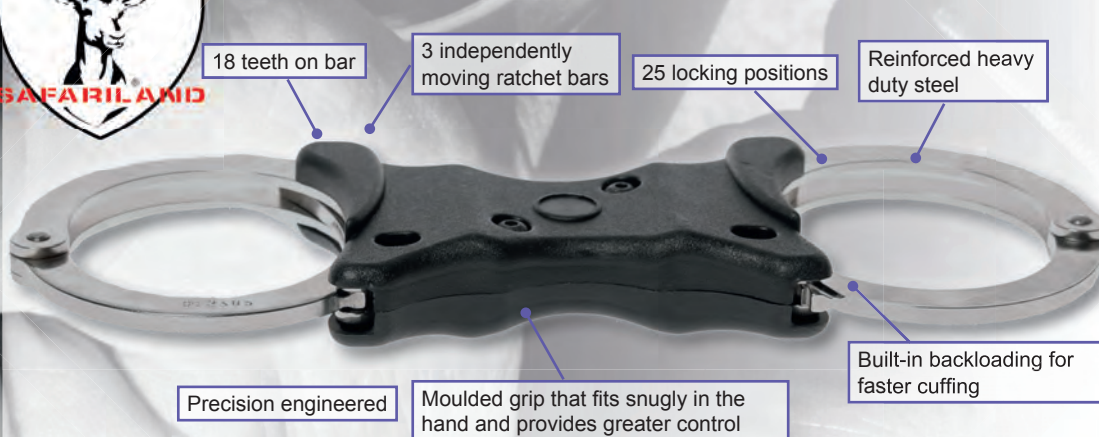


**In Law Enforcement you need confidence in your kit! Have confidence in yours by selecting only the finest equipment from brands you know and trust.**



**SAFARILAND**

### HIATT RIGID HANDCUFFS



**Capable of providing the security and restraint of an ordinary handcuff along with the power and control that comes from its solid bar design. Speedcuffs possess all the features of Hiatt's Deluxe Handcuffs.**

- As used by many UK police forces. The HIATT SPEEDCUFF is a purpose designed package comprising an integral rigid steel handcuff and an ergonomic plastic grip and is complete with Hiatts exclusive backloading feature for speed cuffing.
- Utilising pressure sensitive areas it can be a significant aid to gaining control. Top quality, heavy duty, steel construction. Added power and control that can only come from a solid bar rigid design. Each set serial numbered. 18 tooth, 3-retaining-bar system for uncompromising security. Positive swing-through action Built-in backloading for fast cuffing. Reinforced steel swivels for added strength and durability.

**Code HH2103 Satin Rigid Cuff**

**Code HH2103 Black Rigid Cuff**





# HIATT HANDCUFFS

## HIATT CHAIN HANDCUFFS



- Top quality, heavy duty, steel construction
  - Hinge design can opened and locked - Creates a solid bar rigid design for added power and control
- Each set serial numbered. 18 tooth, 3 retaining-bar system for uncompromising security. Positive swing-through action. Built-in backloading for fast cuffing. Reinforced steel swivels for added strength and durability.

**Code HHU-L**

## HIATT COLOURED



- Can be used to classify threat levels, ages, agency, medical conditions, and other factors
- Available in Pink, Purple, Green, Blue, Red, Yellow and Orange

**Special Order Call for details.**



## IMPORTANT INFORMATION

We advise that you are properly trained and insured in the use of handcuffs and restraints. It is your responsibility to familiarise yourself with UK laws regarding the carry and use of cuffs and restraints. It is your responsibility to ensure that cuffs and restraints are used in an appropriate manner and within the constraints of the law.



**FOR MORE INFORMATION CONTACT  
NITON TRAINING 2001 LTD  
TELEPHONE 01293 549858, OR SEE  
WWW.NITONTRAINING.CO.UK**



Hiatt's line of chain style handcuffs set the standard for strength and reliability. Crafted from heavy duty stainless steel, they have reinforced steel swivels that make them a rugged tool for criminal justice professionals. Like all Hiatt Handcuffs, they feature an 18-tooth, 3 retaining bar system paired with a positive swing-through action, built-in back-loading feature for fast cuffing, heavy duty construction with oversized rivet heads for added strength, and side double locks.

## HIATT CHAIN HANDCUFFS



Certified  
Under NIJ  
Standard  
0307.01



- 23 locking positions
  - Each set serial numbered
- Shackle diameter from 5-1/4" to 8-1/4" Weighs 11 oz. Includes two standard handcuff keys. Made from top quality steel, the chain style model features reinforced steel swivels for added strength and durability.

**Code HH8112**

**Black or Nickel**

## HIATT CHAIN BIG GUYS



- 17% Larger than standard size
  - Ideal for Big Guys who have trouble placing their hands behind their back
  - 22 locking positions
- Shackle diameter from 5-3/4" to 9-1/4" Weighs 12 oz. Each set serial numbered. Includes two standard handcuff keys.

**Code HH81122**

**Nickel Chain Big Guy**

**Code HH81122**

**Black Chain Big Guy**



# Why choose Hiatt?

225 YEARS OF EXPERIENCE -  
INNOVATION NOT IMITATION

Built in back-loading feature for faster cuffing

Heavy duty construction with domed rivet heads for added strength

18 teeth - 3 retaining bars with 6 teeth on each bar.

Leaf spring double locking system that is nearly impossible to defeat

True spring technology ensures the shackles hits the centre of the cuff ever time



Slip your hands around the grip of the hinged handcuffs and feel the control. Made using solid links to connect the cuffs as opposed to the roller chain used on chain style cuffs. The extended hinged models provide greater subject control and feel more comfortable in your hand.

## HIATT HINGE HANDCUFFS



- 23 locking positions
- Each set serial numbered

Crafted from high quality steel, the hinge style cuffs feature heavy duty, solid hinges for reinforced holding power. Solid links connect the cuffs as opposed to the roller chain. Hinged models provide greater subject control. More comfortable feel in your hand. Shackle diameter from 5-1/4" to 8-1/4" Weighs 11 oz. Includes two standard handcuff keys.

**Code HH2050 Nickel Standard Hinge**



Certified  
Under NIJ  
Standard  
0307.01



## HIATT HINGE BLACK



- 23 locking positions
  - Each set serial numbered
- Crafted from high quality steel, the hinge style cuffs feature heavy duty, solid hinges for reinforced holding power. Solid links connect the cuffs as opposed to the roller chain. Hinged models provide greater subject control. More comfortable feel in your hand. Shackle diameter from 5-1/4" to 8-1/4" Weighs 11 oz. Includes two standard handcuff keys.

**Code HH8122 Black Standard Hinge**

## HIATT EXTENDED HINGE



- 17% Larger than standard size
- Ideal for Big Guys who have trouble placing their hands behind their back
- 22 locking positions

Shackle diameter from 5-3/4" to 9-1/4" Weighs 12 oz. Each set serial numbered. Includes two standard handcuff keys.

**Code HH2060 Nickel Extended Hinge Big Guy**

## HIATT HINGE BIG GUYS



- 17% Larger than standard size
- Ideal for Big Guys who have trouble placing their hands behind their back
- 22 locking positions

Shackle diameter from 5-3/4" to 9-1/4" Weighs 12 oz. Each set serial numbered. Includes two standard handcuff keys.

**Code HH81222**





# HANDCUFFS KEYS

## HANDCUFF HELPER



- An Accessory That Prevents Small Wrists From Slipping Through Fully Closed Handcuffs
- Easy to install and impossible to remove while the cuff is closed on a wrist. Provides ultimate security against cuff slipping while reducing wrist injury from abrasion caused by contact with the handcuff locking arm.

**Code AA439**

## CONCEALABLE HANDCUFF KEY



**ACTUAL SIZE**

- Concealable Backup Handcuff Key
  - Undetectable by metal detectors
  - Small, flexible and light - can be hidden anywhere on clothing, watches, hats and shoes
  - Strong enough to be used as a duty key
  - Can be deployed and used silently to escape notice
- Nonmetallic key is the size and shape of a 2 pence piece disguising it so it does not appear to be a key.

Made from a specially composite for lightweight durability and flexibility, this universal handcuff key can be hidden behind shirt or trouser buttons, beneath watches, beneath mace cans and in and around footwear. Specifically designed for the US Special Forces and elite federal law enforcement units.

Specially configured to hang on the threads that hold buttons on shirts and pants. Once the shirt or pants are buttoned normally the key is not visible nor is it easily found during search.

Total diameter: 2.5cm

**Code UHCK-B**

## COMPACT RESTRAINTS



**NEW**

- Simple and effective to use - They can be applied fast and effectively, maintaining the safety of the public, officers and the prisoner.
- Supplied in pairs, the Niton Tactical Restraints are made from durable nylon and Velcro to provide fast and effective control. Stored in their own nylon belt pouch these restraints are always readily accessible and easily deployed.

Our limb restraints are designed for use on prisoners who are aggressive or violent, posing a risk to themselves and others. If the prisoner is handcuffed the restraints can be applied to the legs to prevent kicking, or applied to the upper arms to prevent punching and pushing if the cuffs have to be removed or reapplied.

Whilst in restraints the prisoner will have enough freedom of movement to walk with assistance, but not enough to cause harm to themselves or officers.

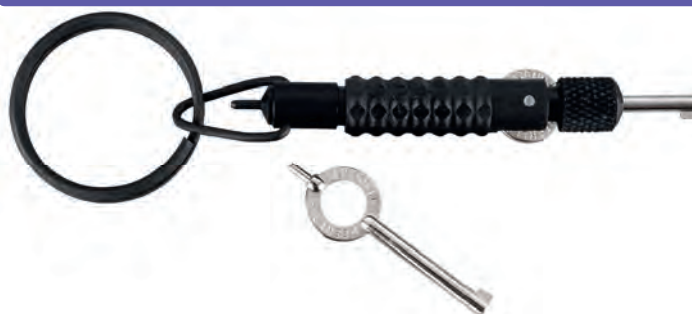
In an emergency these restraints can also be used as a first aid aid tool, for example to help splint fractures or immobilise limbs until medics arrive.

126cm / 50inch L x 5cm / 2inch W

**Code TAC80**



## CUFF KEY CONVERTER



- Add extra length to your standard issue cuff key
- Made of Carbon fibre, complete with heavy split ring and one standard handcuff key.

**Code AA391**

## SPEED TRAINING KEY



**NEW**

- Triple your practice time, unlocks handcuffs in seconds
- Magnets hold them to cuff for repetitive use. Easily removed after training. Fits most standard cuffs (Rigid to special order please call)

**Code AA022**

## STILETTO HANDCUFF KEY

**NEW**



- Switchblade style spring loaded key pops out of end with the push of a button.
- High strength polymer body with heat treated alloy steel handcuff key. Pocket clip attaches to shirt pocket. 5" long, extends to 6 1/8". Deploy your handcuff key with style.

**Code ZT95**

## NITON TACTICAL 25% LARGER SWIVEL CUFF KEY

**FED UP WITH FUMBLING FOR YOUR CUFF KEY?**

**NEW**

**QDA**

**EXCLUSIVE UK**



**ACTUAL SIZE**

- Are you tired of rummaging around for your cuff key when you need it in a hurry? Do you have to keep taking off your gloves whenever you want to use your keys?
  - The new Niton Tactical Cuff Key is longer and wider than our standard cuff key making it much easier to locate and use quickly - even with gloves on!
  - 11cm long and 0.9cm in diameter our Tactical Cuff Key is 25% larger than a normal key
  - Knurled shaft for extra grip
  - Swivel head with key ring attachment to allow use with your lanyards keyrings hangers and holders
  - Made from black aluminium making it lightweight and resistant to corrosion
  - Double locking pin
  - Designed to fit most handcuffs currently available on the market
- Niton Equipment has 15 years of experience creating and sourcing products specifically designed to make your everyday duties easier and faster. We received requests from handcuff users for easier to use keys and the Niton design team have responded with a superior key that has all the features you need at a great price.

**Code TAC76**



## STANDARD SWIVEL HANDCUFF KEY



- New lightweight Polymer housing with heat-treated steel components.
- Round Swivel handcuff key with key ring. Fits most common brands including HIATT.

**Code AA016**

## POCKET PEN HANDCUFF KEY



- New lightweight Polymer housing with heat-treated steel components.
- Pocket Pen handcuff key with pocket clip. Fits in your pocket where you can always find it quickly. Fits most common brands including HIATT. Length 10.5cm.

**Code AA036**

## STANDARD SWIVEL HANDCUFF KEY

**NEW**



- Lightweight aluminium housing with heat-treated steel components.
- Round Swivel handcuff key with key ring. Fits most common brands including HIATT.

**Code ZT10**

## POCKET PEN HANDCUFF KEY

**NEW**



- Lightweight aluminium housing with heat-treated steel components.
- Pocket Pen handcuff key with pocket clip. Fits in your pocket where you can always find it quickly. Fits most common brands including HIATT. Length 10.5cm.

**Code ZT13**





# GEARKEEPERS

## GEARKEEPER LOW FORCE MODEL



- Velcro strap securely wraps and cinches around web gear or gun belt above holster
- Preferred by Military and Tactical teams Gear Keeper Retractable

A streamlined profile to eliminate snagging when entering/exiting vehicles or aircraft. Keeps equipment accessible if dropped. Developed with and used by SWAT and the military. Does not retract firearm but prevents loss. A defined breakpoint if sidearm does get entangled.

Quick disconnect system allows firearm to easily disconnected from tether

**Code GKRT25530A**      **Velcro Strap**

## GEARKEEPER LOW FORCE MODEL



- Rotating Belt Clip: Securely attaches to gun belts behind holster (up to 2 1/4")
- Rotates 360 degrees for ease of use and minimal line wear

Preferred when web gear is not used. Allows for very streamlined/compact configuration with minimal movement or noise.

Keeps equipment accessible if dropped. Developed with and used by SWAT and the military. Does not retract firearm but prevents loss. A defined breakpoint if sidearm does get entangled.

Quick disconnect system allows firearm to easily disconnected from tether

**Code GKRT2550E**      **Rotating Clip**

## DUTY SNAP MOUNT

- Heavy Duty Snap Clip: Attaches to D-ring or belt loop
- Quick Connect-II (Q/C-II) Impact-Resistance Plastic Case that is saltwater proof and has a self-cleaning feature to flush sand and debris when operated in water.

360 degree rotating belt clip allows the retractor to rotate during use. Built tough to survive severe and moist environments.

**Code GKRT20040**



## VELCRO MOUNT

- Velcro Strap: Velcro strap securely wraps and cinches around any loop, bar, belt, or strap
- Quick Connect-II (Q/C-II) Impact-Resistance Plastic Case that is saltwater proof and has a self-cleaning feature to flush sand and debris when operated in water.

360 degree rotating belt clip allows the retractor to rotate during use. Built tough to survive severe and moist environments.

**Code GKRT20030**



## GEARKEEPER SUPER FORCE



- Will suspend firearm - stabilises force while aiming.
- Prevents firearm from hitting or dragging on ground.

When it's necessary to have a Sidearm Tethered, Gear Keeper Retractable Tethers offer:

A streamlined profile to eliminate snagging when entering/exiting vehicles or aircraft. Keeps equipment accessible if dropped. Developed with and used by SWAT and the military. Does not retract firearm but prevents loss. A defined breakpoint if sidearm does get entangled. Quick disconnect system allows firearm to easily disconnected from tether.

**Code GKRT35533**      **Velcro Strap**  
**Code GKRT3553E**      **Rotating Belt Strap**  
**Code GKRT35563**      **Rotating Clamp on**



**Code GKRT3553E**

**Code GKRT35563**

## PIN MOUNT

- Pin Mount: Threaded pin penetrates fabric or webbing. Then screws into back of retractor
- Quick Connect-II (Q/C-II) Impact-Resistance Plastic Case that is saltwater proof and has a self-cleaning feature to flush sand and debris when operated in water.

360 degree rotating belt clip allows the retractor to rotate during use. Built tough to survive severe and moist environments.

**Code GKRT20020**





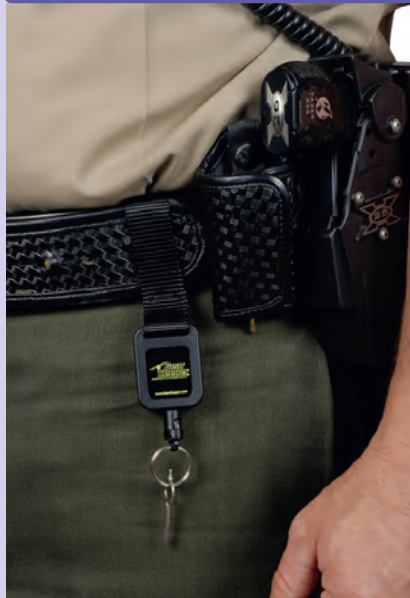
## HANDCUFF KEY - FIXED

- Ideal for correctional officers where it is not possible to disconnect handcuff key and split ring from Gear Keeper.
- Allows easy and secure use of handcuff key
- Doesn't take up valuable belt space



**Code GKRT25831**  
**Fixed End**

## GEARKEEPER HANDCUFF KEY - DETACHABLE



- Allows handcuff key to be easily removed from Gear Keeper with Q/C System
- Allows easy and secure use of handcuff key
- Doesn't take up valuable belt space

**Code GKRT25830**  
**Disconnectable End**



## GEARKEEPER MOLLE MOUNT



- 2 Molle attachments in 1! 360° Rotating & Velcro Strap MOLLE Mount
  - Compact mount minimizes gear movement
- Rotation minimizes resistance & maximizes line life. Allows Gear Keeper to swing out during use for minimal resistance & max line life. Quickly and easily disconnect from Gear Keeper. Included Accessory: Q/C-I Split Ring.
- Note: Gear will have more movement when not in use.
- Available in 3 Options:

**Code GKRT45170**      3oz      91cm  
**Code GKRT45171**      6oz      91cm  
**Code GKRT45174**      9oz      81cm



**Code GKRT45174**

## MICRO KEY MOUNT

- RT5 Super Badge retractor is specifically designed for the rigorous of daily security use.
- Gear Keeper RT5 Super Badge Retractor has an array of proprietary, industry leading features that puts it in a class of its own for security, versatility and reliability.
- The tether comes with a 360° rotating spring clip belt mount, so the security card is always kept in the correct position and rotates seamlessly to insert, slide or present the card when needed.

**Code GKRT55830**



## ACCESSORIES



**Code GK1010502**      Adhesive Pad  
**Code GKAC00902**      Lanyard 1" Split Ring  
**Code GKAC00908**      Lanyard Nylon Loop  
**Code GKAC0903**      Lanyard 3/8" Split Ring  
**Code GKAC0901**      2 x 7/8" Split Ring

## GEARKEEPER RT3 SECURITY

- Nylon Line with Kevlar Core
  - Quick Connect-II (Q/C-II)
- Impact-Resistance Plastic Case that is saltwater proof and has a self-cleaning feature to flush sand and debris when operated in water.
- 360 degree rotating belt clip allows the retractor to rotate during use.
- Built tough to survive severe and moist environments. In addition, the exclusive interlock feature prevents the gear keeper from becoming dislodged while attached yet allows easy removal. Stainless steel components survive in salt water environments

**Code GKRT35818**





# HANDCUFF POUCHES

## RIGID CUFF



- Carries all Rigid Cuffs
  - Secure carry with quick access
- Concealed key pocket. Colour: Black.

**Code NPW014 BELT**  
**Code KF019 DOCK**

## STANDARD CUFF



- Double popper fastening
  - Takes most chain / hinged cuffs
- A hidden tab at the rear of the pouch conceals a pocket for your spare key. Colour: Black.

**Code NPW008 BELT**  
**Code KF024 DOCK**

## JAILERS KEY RING



- Made of 3mm (1/8") diameter steel.
- Unique tension closure, the more tension, the stronger it becomes. Available in 3 sizes: 90mm (3.5"), 115mm (4.5") and 150mm (6") diameter. Keys not included.

**Code AA479**

## FIXED 45° RIGID CUFF



- Double secure
  - Fixed 45 degree rake
  - Left or right hand carry
- Double Velcro strap secures the cuffs into the pouch. Hidden key pocket. Colour: Black. Left or Right Handed.

**Code NPW092. L / R**

## LARGE CUFF



- Fits Chubb or Hiatt (HH2060) extended hinged cuffs
- Constructed as per the standard pouch. Concealed key pocket. Colour: Black.

**Code NPW017 BELT**  
**Code KF025 DOCK**

## SECURE -A- KEY



- Patented double-locking arm prevents accidental key loss
- Stainless steel so that it will not rust and gives it added strength when clipped to a belt. Measures 50mm (2") and comes complete with split ring.

**Code AA474 Clip On**  
**Code AA475 Slip on**

## FULLY ADJUSTABLE CUFF POUCH



- Left or right hand carry
  - 8 point adjustment
- Fits all Rigid Cuffs. Speed adjust achieved by snap fasteners. Ideal for covert carriage as well as overt. Colour: Black. Left or Right handed.

**Code NPW059 L / R**

## ULTIMATE CUFF



- Fits Ultimate cuffs (HHUL-1)
- 50mm Belt loop. Concealed key pocket. Concealed key pocket. Colour: Black.

**Code NPW065**

## KEY MATE



- Nickel plated brass pull-part key release - easy split 2 sets of keys
- Comes complete with two 25mm (1") split rings. Available in Silver, Pink, Green, or Blue

**Code AA478**



## TWIST & LOCK KEY RING



- Strong, flexible, corrosion-resistant
  - Unique patented locking mechanism assures keys stay secure.
- Colour: Black. Keys not included.  
Measurements: 40mm when done up.  
**Code AA477**

## CARABINER PAIRS



- Strong & durable
  - 6mm or 8mm
- Packed in pairs. Ideal for holding keys.  
NOT suitable for climbing.  
**Code TAC133 6mm**  
**Code TAC134 8mm**

## TACTICAL KEYRING HOLDER



- Maximum security for your keys
  - Steel exceed 220kg pull test
  - Securely slides onto belts up to 50mm wide.
- Easy One handed operation. Reliable and secure positive retention. Colour: Black.  
**Code AA063**

## RETRACTABLE KEY HANGER & HOLDER



- Black and chrome retractable key hanger
- Comes complete with key ring and belt clip. Ideal for handcuff keys. PICTURED

**Code AA340**

- Retractable Key hanger holder
- 50mm Belt loop  
1000 denier, Velcro closure. Fits most retractable key hangers.

Keyhanger & key sold separately. Colour Black.

**Code NPW155**



## LOCKABLE KEY HANGER



- Retractable lockable key hanger
- Comes complete with key ring and belt clip. Ideal for Handcuff keys.

**Code AA339**

## CARABINER LANYARD



- 100 kg breaking strain braided kevlar (80kg)
- Coiled 200mm, extends to 1300mm  
Colour: Black.

**Code L004**

**Carabiner**

## STANDARD LANYARD



- 100 kg breaking strain braided kevlar (80kg)
- Coiled 200mm, extends to 1300mm  
Keys not included. Colour: Black.

**Code L002**

**Standard**

## JAILERS LANYARD



- Two sprung key clips and split rings - Ideal for Jailers
- 100 kg breaking strain braided kevlar (80kg). Coiled 200mm, extends to 1300mm. Less wear to clothing, more security and comfort. Keys not included. Colour: Black.

**Code L003**



## RESTRAINTS

### CUSTOM RESTRAINTS



**Violent Passengers**



**Escorting Prisoners**

At Niton we have designed restraints for all manner of situations, including: Covert escort restraints, prisoner transportation suits and violent passenger restraints for numerous airlines. We have a specialist team who can design, manufacture and train you in restraints to meet with your specific needs. Call us on 01293 549858 for further details.



**FOR MORE  
INFORMATION  
CONTACT  
NITON TRAINING  
2001 LTD  
TELEPHONE  
01293 549858,  
OR SEE**

**WWW.NITONTRAINING.CO.UK**

### LEATHER WRIST GUARD



- Ideal for escorting and training duties - Fast and easy to apply
- Just wrap around your wrist for maximum comfort when escorting prisoners or during training.

Escorting even compliant prisoners or a long day training can cause handcuffs to chafe and rub your wrist. Our leather wrist guard will prevent any chafing and irritation during training or escorting duties. Leather wrist strap may be used to provide comfort when using handcuffs in an escort /prisoner transport situation. 25cm L X 5cm W

**Code LPW080**

### NEOPRENE WRIST GUARD



- Neoprene wrist protector for reinforced padding over key pressure points of wrist - fully washable
- Ideal for transport or training scenario.

Constructed from high quality neoprene, it's comfortable to wear and fully washable. Provides support to the wrist as well as protection. Available in: Left or Right Handed.

**Code NPW163**

### COMPACT RESTRAINTS



- Re-usable restraint straps, no knots or ties
- Using the natural hollows of the body, (under the ankles, knees, small of back and nape of the neck), Help-ERS can be easily positioned without disturbing the casualty

Help-ERS (Emergency Restraint Straps) are a simple piece of equipment that are equally suitable for restraining limbs for prisoner control, or first aid treatment. With only a few minutes instruction, you can easily immobilise restrained persons or splint fractures, control external bleeding, hold dressings in place and apply arm slings. Help-ERS are available as pairs of long straps in black or short straps in red, which are secured using Velcro fastening. Help-ERS can be made longer by simply joining them ensuring that the full length of the nylon fastening (hook to loop) is used. If Help-ERS are used for prisoner restraint they should only be used around limbs. Restrained persons should NEVER be left unattended. Specification, Long Black Straps 50mm webbing x 126cm long. Short Red Straps 50mm webbing x 78cm long. Sold as follows.

**Code NPW500 One Pair of Long Help-ERS**

**Code NPW501 One Pair of Short Help-ERS**

**Code NPW502 Long and Short Helpers in Belt Pouch Kit**



# VIPERS

## FULL RESTRAINT KIT



### Do you want to...

- Reduce Compensation
- Comply with Health & Safety
- Safe guard human rights
- Protect your officers from injury?

Research has shown that over 40% of officer injuries are sustained after handcuffing.

There is now a simple way of quickly and safely securing the combative prisoner: The VIPER Full Restraint Kit.

This is a revolutionary design that allows law enforcement personnel to safely restrain and immobilise combative subjects without the dangers associated with hog-tying or restraining around the chest or stomach. This equipment quickly immobilises the lower and upper limbs, and allows the subject to be sat or stood up. This reduces the risk of positional asphyxiation, in addition to protecting the subject from injuring him or herself. The equipment also totally restricts his or her ability to kick or harm others.

What makes it effective is that it does not impair respiration or cut off circulation. In fact field tests have shown that once secured, the equipment actually has a calming effect on many subjects.



**FACT:** Assaults on Law Enforcement Officers have increasingly become an issue for Police Forces and Government Departments across the country. Law enforcement personnel are forced to deal with people who are exhibiting violent, combative behaviour, and as a result both prisoners and law enforcement personnel are sustaining unnecessary injury.



**Over 40% of officer injuries are sustained after handcuffing.**

- Simple to use, requires minimal training and minimal psychomotor skills
- Training can be accomplished in under thirty minutes
- It uses a combination of simple effective principles and modern hi-tec materials. Has no metal parts, does not constrict the chest and permits a certain amount of movement. In case of emergency the device can be released in seconds. This Restraint can be used on a violent person who has been physically controlled and is suitable to restrain persons in custody, undergoing transportation. We believe that this product is essential equipment for those engaged in detaining persons who act or have the potential to act violently. This restraint is standard equipment with a major UK police force and has had considerable success in reducing injuries to both officers and prisoners. Benefits: Fast and simple application. Easy to transport subject in a safe, upright seated position. Subject can be slowly walked while restrained. Minimises the need for manual handling. Only the limbs are restrained. Training can be accomplished in a short space of time. Minimises the risk of injury to the subject and officer alike. Compact, easy to carry and use. Provides several methods of restraint. Allows for medical treatment while restrained. Complete kit with carrying bag.

**Code NPW505**



## RESTRAINTS

### COMPACT RESTRAINTS



- Simple and effective to use - They can be applied fast and effectively, maintaining the safety of the public, officers and the prisoner.
- Supplied in pairs, the Niton Tactical Restraints are made from durable nylon and Velcro to provide fast and effective control. Stored in their own nylon belt pouch these restraints are always readily accessible and easily deployed. Our limb restraints are designed for use on prisoners who are aggressive or violent, posing a risk to themselves and others. If the prisoner is handcuffed the restraints can be applied to the legs to prevent kicking, or applied to the upper arms to prevent punching and pushing if the cuffs have to be removed or reapplied.

Whilst in restraints the prisoner will have enough freedom of movement to walk with assistance, but not enough to cause harm to themselves or officers.

In an emergency these restraints can also be used as a first aid tool, for example to help splint fractures or immobilise limbs until medics arrive. 126cm / 50inch L x 5cm / 2inch W

**Code TAC80**



### ARM / ANKLE RESTRAINT



- 50mm nylon polypropylene belt divides into two straps at each end and adjusts to fit any size arms or ankles
- Can be used in a variety of ways to give control for safer handling. Velcro fastening secures your prisoner quickly and easily. Restrained persons should NEVER be left unattended.

**Code NPW503**





## PLASTIC CUFFS



### COMPACT SPARE & DOUBLE CUFF



- The compact versions of the Spare Cuff and Double Cuff are user friendly and easy to carry and store. An ideal back-up to steel handcuffs, they can be carried in a pocket, briefcase, glove compartment, or any other discreet location. Compact size is 3 3/8" (8.57cm).

CODE	DESCRIPTION	LENGTH	MATERIAL	COLOUR
<b>MON4104</b>	Spare Cuff	22" (55.88cm)	Nylon	White
<b>MON4105</b>	Spare Cuff	22" (55.88cm)	Nylon	Black
<b>MON4203</b>	Double Cuff	34" (86.36cm)	Nylon	White
<b>MON4204</b>	Double Cuff	34" (86.36cm)	Nylon	Black
<b>MON4205</b>	Double Cuff	34" (86.36cm)	Nylon	Red**

\*\* Training ONLY



### SAFETY CUTTER & CUFF COMBO



- The Safety Cutter provides lever action for smooth cutting of the Double Cuff and Spare Cuff as well as most other disposable plastic restraints. Pocket size for convenient storage. Simple to operate with one hand, especially in tight spaces, day or night. Cannot be used as a weapon against you – the Break Point guards against an attempt to access the cutting blade to fashion a weapon. Can be used to cut vehicle seat belts or clothing in an emergency.

CODE	DESCRIPTION	MATERIAL	COLOUR
<b>MON4004</b>	Safety Cutter /w 2 White Compact DOUBLE Cuffs	HIPS/Nylon	White
<b>MON4005</b>	Safety Cutter /w 2 Black Compact DOUBLE Cuffs	HIPS/Nylon	Black
<b>MON4006</b>	Safety Cutter /w 4 White Compact SPARE Cuffs	HIPS/Nylon	White
<b>MON4007</b>	Safety Cutter /w 4 Black Compact SPARE Cuffs	HIPS/Nylon	Black



### SPARE SINGLE CUFF



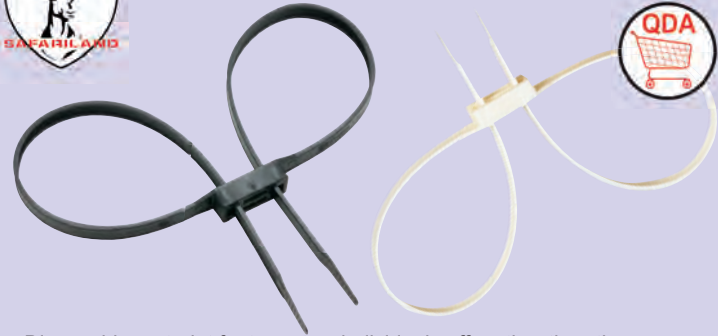
- 22" (55.88cm) when laid flat 1 1/2" (1.27cm) wide to reduce subject injury and allow space to write directly on them.

CODE	DESCRIPTION	LENGTH	MATERIAL	COLOUR
<b>MON4100</b>	Spare Cuff	22" (55.88cm)	Nylon	Black
<b>MON4101</b>	Spare Cuff	22" (55.88cm)	Nylon	White

Also available in 100 count bulk package.



### DOUBLE CUFF



- Disposable restraint features two individual cuffs rather than the standard single cuff. This gives the officer the ability to control a suspect after one cuff is placed on the wrist or forearm.
- Standard length is 34" (86.36cm) 1/2" (1.27cm) wide to reduce subject injury and allow space to write directly on them. Greater control during subject cuffing. Tensile strength of more than 400 lbs. (181.44 kg). Can be used on wrists and ankles.

CODE	DESCRIPTION	LENGTH	MATERIAL	COLOUR
<b>MON4200</b>	Double Cuff	34" (86.36cm)	Nylon	White
<b>MON4201</b>	Double Cuff	34" (86.36cm)	Nylon	Black
<b>MON4202</b>	Double Cuff	34" (86.36cm)	Nylon	Red**
<b>MON4210</b>	Double Cuff	34" (86.36cm)	Nylon	Blue
<b>MON4211</b>	Double Cuff	34" (86.36cm)	Nylon	Green
<b>MON4212</b>	Double Cuff	34" (86.36cm)	Nylon	Orange
<b>MON4213</b>	Double Cuff	34" (86.36cm)	Nylon	Pink
<b>MON4214</b>	Double Cuff	34" (86.36cm)	Nylon	Purple
<b>MON4215</b>	Double Cuff	34" (86.36cm)	Nylon	Yellow
<b>MON4216</b>	Double Cuff	34" (86.36cm)	Nylon	Lime Grn
<b>MON4217</b>	Double Cuff	34" (86.36cm)	Nylon	Tan

Also available in 100 count bulk package. \*\* Training ONLY



- Monadnock has expanded its line of Double Cuffs to include colour-coded models in yellow, pink, lime green, green, purple, blue, orange and tan. These colours can be used to identify threat levels, ages, agency, medical conditions and other factors that apply.

## KEY-CUFF™



• Manufactured from a high-impact, high-tensile strength engineered polymer.

• Lightweight, allowing easy concealment with the capability to carry many at a time.

Applied in a normal manner, the Key-Cuff is easily adjusted once in place. For easy removal, simply use a standard handcuff key. **NO DANGEROUS CUTTING TOOL IS NEEDED!** Key-Cuff can be used 6-8 times under normal conditions.

Specifications: Length: 21 inches. Width: .35 inches.

Tensile Strength: 350+ lbs.

Colours: Black (Orange, red, olive drab, and sand available to special order)

**Code AA400**



## HOLDERS &amp; CUTTERS



CODE	DESCRIPTION	MATERIAL
<b>MON4031</b>	Compact Cuff	Soft Nylon
<b>MON4002</b>	HDC For Disp.Cuffs	Plastic
<b>MON4015</b>	Cuff Bundle Holder	Metal
<b>MON4000</b>	Metal Cuff Cutter	Metal
<b>MON4003</b>	Safety Cutter	HIPS

## TUFF-TIES backup cuffs

**• For over 15 years TUFF-TIES have been used and approved internationally by the Military and over 4,000 federal, state, county, local police agencies, and security forces in all types of arrest and restraint situations.**

## SPECIFICATIONS

**Cord Tensile Strength: Over 800 lbs.**

**Cord Material: Flat Diamond Braided Nylon**

**Locking Block Material: Reinforced Polycarbonate**

**Assembly Weight: Only 8 grams (Approximately 1/4 oz.)**

**Loop Circumference: 12.5" each side**



## TUFF-TIES BACKUP CUFF

• Approved internationally by over 4,000 federal, state, county, local police agencies, and security forces in all types of arrest and restraint situations

• Cord Tensile Strength: Over 800 lbs.

• Cord Material: Flat Diamond Braided Nylon Loop Circumference 12.5"

**Code TUFF.B Single**

**Code TUFF.50 50 Pack**

**Code TUFF.100 100 Pack**

LARGER PACKS AVAILABLE CALL FOR DISCOUNTED PRICES

## TUFF-TIES BACKUP KIT

• Two Tuff-Ties, Pouch & Cutter  
• Compact, easy access to your tuff-ties. No need to carry bulky back-up cuffs. Choose from Niton or Bianchi Patrol Tec Pouch.



**Code TUFFNPAK**  
**Code TUFFBPAK**  
**Code TUFFCUT**

Niton  
Bianchi  
Cutter Only

• **40% STRONGER:** TUFF-TIES are at least 40% stronger than the electrical cable style ties.

• **STORAGE LIFE:** TUFF-TIES have unlimited storage life. Plastic cable ties have been known to deteriorate and become brittle in less than a year requiring that the stock be replaced at least yearly.

• **EASE OF CARRY & CONCEAL:** Plastic cable ties are normally carried in the hatband or looped over the officer's belt. Multiple pairs of TUFF-TIES easily fit in the pocket, the cavity of the handcuff case, the glove box of the car, etc. When carried in the pocket, TUFF-TIES will not become entangled. Undercover officers commonly conceal the TUFF-TIES in the tops of their socks.

• **NON-INJURIOUS TO THE SKIN:** The hard, barely flexible plastic cable ties have distinct edges which frequently result in self injury by the struggling prisoner. TUFF-TIES are soft, flexible, have no sharp edges, and conform to the contours of the wrist. They were designed to not cut into the skin. Unlike cable ties, TUFF-TIES are designed with a small amount of "give" to prevent cutting off circulation.

• **WEATHER CONDITIONS:** Plastic cable ties can deteriorate when exposed to sunlight or heat. TUFF-TIES are impervious to any kind of weather conditions. TUFF-TIES are unaffected by exposure to sunlight and they remain flexible even in the coldest weather.

• **QUALITY OF MATERIAL:** TUFF-TIES blocks are made from the highest quality polycarbonates. The braid is of the same nylon cord that is used in truck radial tyres. Additionally, a component is added to the block to make it practically indestructible. Every unit is inspected prior to sale.

• **EASE OF USE:** The TUFF-TIE preformed loops slip easily on to the prisoner and are snugged and locked in seconds. Plastic cable ties require application around the prisoner's crossed wrists. The difficulty in applying cable ties in this fashion frustrates the officer, and is the most common reason why the officers eventually resort to using two plastic cable ties per prisoner.

• **HOW TO REMOVE:**

• Quick (1-second release)  
• Safe - Can't be used as weapon  
• Comfortable to Carry  
• Precludes Need to Carry Pliers, Knives, or Scissors or other potential weapons  
• Alternately Used in Rescue Operations - cuts through seat belts like butter





# MONADNOCK BATONS



## MONADNOCK AUTOLOCK

POWER SAFETY TIP

SAFETY TIP

The AutoLock® Baton is always ready when you are by utilizing a revolutionary cam and ball bearing action. Its exclusive patented built-in safety features make it easy to access, open, control and hold on to. Once opened, it stays locked open until you're ready to collapse it by pushing a single button, one time. Compact and comfortable to wear, AutoLock® Baton is designed to be carried with you at all times. These batons can be used with virtually all standard baton techniques and tactics or training programs.

CODE	DESCRIPTION	HOLDER
AUTOLOCK BATON: BLACK CHROME WITH FOAM GRIP		
<b>MON9180</b>	16" (40.64cm) w/ Safety Tip	<b>MON3042</b>
<b>MON9170</b>	18" (45.72cm) w/ Power Safety Tip	<b>MON3042</b>
<b>MON9120</b>	21" (53.34cm) w/ Safety Tip	<b>MON3030</b>
<b>MON9130</b>	22" (55.88cm) w/ Power Safety Tip	<b>MON3034</b>
<b>MON9121</b>	26" (66.04cm) w/ Power Safety Tip	<b>MON3056</b>
AUTOLOCK BATON: BLACK CHROME WITH SUPER GRIP		
<b>MON9172</b>	18" (45.72cm) w/ Power Safety Tip	<b>MON3042</b>
<b>MON9141</b>	21" (53.34cm) w/ Safety Tip	<b>MON3030</b>
<b>MON9152</b>	22" (55.88cm) w/ Power Safety Tip	<b>MON3034</b>
<b>MON9146</b>	26" (66.04cm) w/ Power Safety Tip	<b>MON3056</b>
AUTOLOCK BATON: NICKEL WITH SUPER GRIP		
<b>MON9241</b>	21" (53.34cm) w/ Safety Tip	<b>MON3030</b>
<b>MON9252</b>	22" (55.88cm) w/ Power Safety Tip	<b>MON3034</b>
AUTOLOCK BATON: NICKEL WITH FOAM GRIP		
<b>MON9220</b>	21" (53.34cm) w/ Safety Tip	<b>MON3030</b>
<b>MON9230</b>	22" (55.88cm) w/ Power Safety Tip	<b>MON3034</b>

NICKEL

BLACK CHROME

SUPER GRIP

FOAM GRIP



## TRAINING TIP



• The 3xT lime green Tactical Targeting Power Safety Tip helps criminal justice professionals improve their striking skill because they can clearly see the track of the baton's tip during demonstrations, practice and/or on the job. The 3xT can be retrofitted on any AutoLock baton with a Power Safety Tip.

CODE	DESCRIPTION	HOLDER
Autolock Defender w/ Tactical Targeting Tip w/ FOAM Grip		
<b>MON9172</b>	18" w/ Targeting Tip	<b>MON3042</b>
<b>MON9152</b>	22" w/ Targeting Tip	<b>MON3034</b>
<b>MON9146</b>	26" w/ Targeting Tip	<b>MON3056</b>
Autolock Defender w/ Tactical Targeting Tip w/ Super Grip		
<b>MON9174</b>	18" w/ Targeting Tip	<b>MON3061</b>
<b>MON9154</b>	22" w/ Targeting Tip	<b>MON3061</b>
<b>MON9148</b>	26" w/ Targeting Tip	<b>MON3061</b>



## AUTOLOCK HG



• With its larger diameter, Monadnock's new AutoLock® HG (Heavy Gauge) offers the traditional feel of a straight baton, but its high-tech AutoLock features mean it performs just like our most advanced expandable batons. Its exceptional balance and higher kinetic-energy potential produce a bigger bang for your effort.

CODE	DESCRIPTION	HOLDER
<b>MON9641</b>	21" w/ Safety Tip	<b>MON3080</b>
<b>MON9652</b>	22" w/ Safety Tip	<b>MON3084</b>



## MONADNOCK DEFENDER

• Protects your gun hand from hostile strikes with a guard that fits over your knuckles. The guard helps keep the baton firmly in your grip during blocking, striking and jabbing techniques. The AutoLock Defender locks open until you decide to collapse it with the push of a button. It is easy to access and open with either a flick of your wrist or a simple pull to achieve a passive draw.

CODE	DESCRIPTION	HOLDER
<b>MON9184</b>	16" (40.64cm) w/ Safety Tip	<b>MON3061</b>
<b>MON9174</b>	18" (45.72cm) w/ Power Safety Tip	<b>MON3061</b>
<b>MON9144</b>	21" (53.34cm) w/ Safety Tip	<b>MON3061</b>
<b>MON9154</b>	22" (55.88cm) w/ Power Safety Tip	<b>MON3061</b>
<b>MON9148</b>	26" (66.04cm) w/ Power Safety Tip	<b>MON3061</b>





## FRICITION LOCK



MARINER

DETECTIVE

• With a quick flick of your wrist, the baton opens instantly. The distinct sound of the mechanism locking into place commands attention, and sends a signal to your opponent that you are armed and ready. This psychological advantage may be all that is necessary to make a subject think twice about resisting arrest.

CODE	DESCRIPTION	HOLDER
Detective Series With Foam Grip		
<b>MON2521</b>	21" w/ Standard Tip	<b>MON3027</b>
<b>MON2523</b>	23" w/ Power Safety Tip	<b>MON3036</b>
<b>MON2510</b>	24" w/ Standard Tip	<b>MON3032</b>
Mariner Series Electroless Nickel & Foam Grip		
<b>MON2530</b>	21" w/ Standard Tip	<b>MON3027</b>
<b>MON2532</b>	24" w/ Standard Tip	<b>MON3032</b>



## PR24



• In law enforcement there's no room for second guessing. You've got to have that same confidence in your equipment. That's why more agencies choose PR-24®. Control batons, the most field-tested batons ever made. PR-24® side handle batons offer maximum protection and the professional advantage. This design is the most field-tested baton for blocking, controlling and striking.

CODE	DESCRIPTION	HOLDER
<b>MON1105</b>	PR-24NX Black Hard Coat Anodized (3.2 x 60.96cm)	<b>MON3010</b>
<b>MON1000</b>	PR-24S Black Polycarbonate (60.96cm)	<b>MON3010</b>



## MONADNOCK FRONT DRAW BATON HOLDERS

- Holder rotates into eight locking positions, making it comfortable to wear.
- Constructed of durable polycarbonate with clip-on or slide-on back. Holds expanded and closed batons - Quick draw from any position.

This baton holder with Clip-On back has a 360 degree swivel capability.

CODE	DESCRIPTION
<b>MON3030</b>	21" Autolock Batons w/ Safety Tip
<b>MON3034</b>	22" Autolock w/ PST or TTT
<b>MON3025</b>	16" Friction Lock w/ Standard Tip
<b>MON3027</b>	21" Friction Lock w/ Standard Tip
<b>MON3032</b>	24" Friction Lock w/ Standard Tip
<b>MON3036</b>	23" Friction Lock w/ Power Safety Tip
<b>MON3010</b>	PR24 Batons
<b>MON3061</b>	All Defender Batons
<b>MON3080/84</b>	Autolock HG Batons



## MONADNOCK HINDI CAP



- The Hindi Baton Cap™ is the latest advancement in the field of baton retention. Most officers are aware of just how important baton retention can be in the field. It keeps your baton out of the hands of violent subjects and enhances the performance of your baton during both striking and restraint techniques. Some of the benefits of the Hindi Baton Cap™ include: Firm grip for maximum performance and control during training or in the field; Easily locate your baton on your belt for quick drawing; Easily identify which is the baton grip end, even if dropped in the dark; Closing your baton is quick and easy because your palm centres over the tip; If you ever drop your baton it will NOT roll far, making it easy to retrieve.

CODE	DESCRIPTION
<b>MON6216</b>	Hindi Cap for Autolock 16" / 18"
<b>MON6213</b>	Hindi Cap for Autolock 21" / 22"
<b>MON6214</b>	Hindi Cap for Autolock 26" (66.04cm)
<b>MON6210</b>	Hindi Cap for all ALL Friction Lock Batons
<b>MON6211</b>	Hindi Cap for all NON Monadnock Friction Lock Batons



## MONADNOCK WINDOW BREAKER



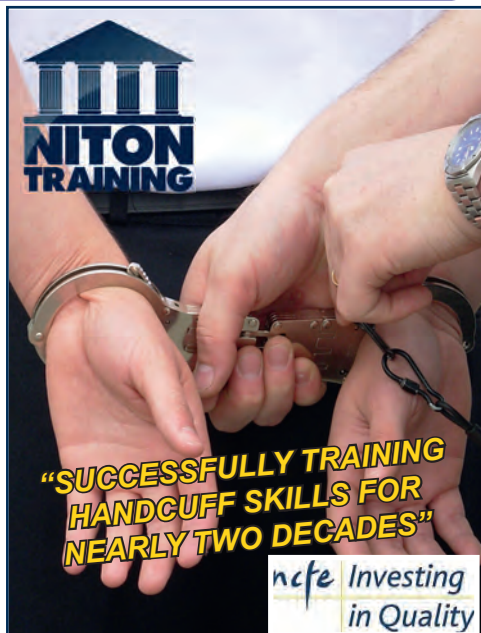
**3 Pack**

- Designed to fit over the tip of a baton and can be used to gain entry to a home, vehicle or other structure that is otherwise inaccessible.
- The hardened steel tip will break the glass quickly and discreetly - repeated strikes not necessary. Made of a hardened steel tip with rubber cap Fits over the baton tip for easy on and off application; fits Standard Tip, Safety Tip® and Power Safety Tip™ Fits a variety of Monadnock® and other batons. Small enough to be carried in your pocket or gear bag. Just a tap and the window breaks. Remove after use as it is not intended to be used with standard baton techniques

**Code MON6153**







## Benefits of the Basic Handcuffing Course

- Reduced Likelihood of Injury to Staff and Subjects
- Reduced Exposure to Criminal and Civil Liability
- Increased Performance, Efficiency and Speed When Applying Handcuffs
- Increased Confidence and Staff Morale
- Increased Safety

## BASIC HANDCUFFING COURSE

This sixteen hour course is the most complete and innovative handcuffing training taught in the UK. The techniques presented are practical and effective and broadly follow the skills taught to the Police in the UK. Therefore, providing you follow these approved techniques and use them in line with the Use of Force Continuum, your actions will be court defensible.

We do not authorise or train independent trainers, therefore your trainers will be directly employed by Niton Training. On average, our trainers have twenty years plus of Law Enforcement experience to draw upon when they are instructing you. Two trainers are always in attendance on our courses.

This course seeks to develop the candidate's skill level to achieve confidence and competence in the basic techniques. The development of psychomotor skills and the methods used to handcuff a person from various control holds. Certification on the successful completion of a handcuff course is valid for a period of one year. Refresher training and certification is required annually in order to maintain Court credibility.  
Course Length: 2 days

SEE OUR WEBSITE FOR CURRENT COURSE DATES

**MORE INFORMATION CONTACT**  
**TELEPHONE 01293 549858**  
**OR LOG ONTO**  
**WWW.NITONTRAINING.CO.UK**

## ROBERT HINDI S.A.F.E.T.Y. SYSTEM DVD



**IF YOU HAVEN'T SEEN THIS DVD,  
THEN YOU HAVEN'T COMPLETED  
YOUR TRAINING!**



**R**obert Hindi is the inventor of the Hindi Baton Cap. He is also a Monadnock Expandable Baton (MEB) instructor who has trained and demonstrated the Hindi Baton Cap's numerous tactical advantages and safety features in conjunction with the expandable straight baton. He has proven that this baton combination is the most advanced and most effective baton system to over 300,000 officers worldwide through the Calibre Press, internationally known, "Street Survival" seminars.

**FACT:** During combat, your duty belt equipment set-up WILL have a direct effect on your ability to stay alive. Most officer injuries, deaths and department liability occur as a direct result of improperly placed equipment. Is your duty belt set up for survival... or failure? The Hindi Duty Belt SAFETY System guarantees to increase your equipment accessing capabilities by 50% or more! The strategic escalation or de-escalation of force capabilities built into this system, are unparalleled.

- 'Must have' DVD for all Police Officers
- "Tested and proven to be the best"
- This system convincingly demonstrates with lightning speed and precision, how simple and easy it is to access and deploy in a moment, all your essential life-saving equipment - WITH EITHER HAND when YOUR LIFE DEPENDS ON IT!

**Code DVD026**